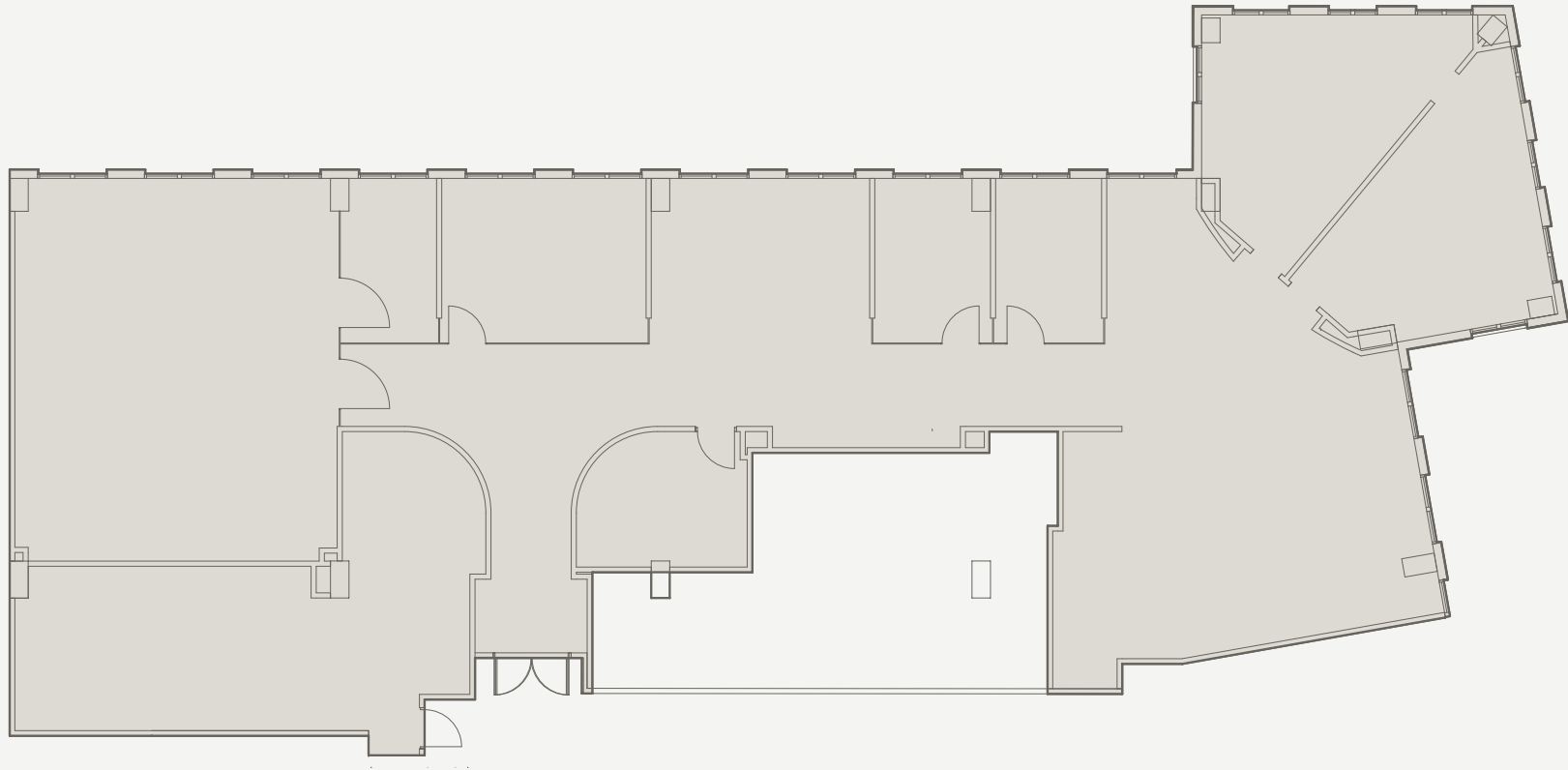
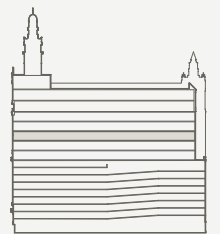
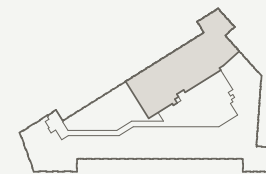




ALHAMBRA
TOWERS



Suite 1201
5,847 SF



Building Amenities

- WELL Health Safety Rating
- Energy Star and Platinum WiredScore certified building
- Award-winning landmark business address
- Walking distance from Coral Gables dining, shopping & entertainment
- Elegant lobby with marble, granite and wood finishes
- Security personnel on duty 24 hours a day, 7 days a week
- Security cameras throughout the building
- 24-hour card access system for tenants
- Covered Porte Cochere to ground floor lobby entry
- Lobby reception desk for visitor processing system
- Fiber optic technology and cable access
- User friendly management A/C system that can be turned on from remote locations
- Uninterrupted back-up generator
- Hurricane impact glass windows on all floors
- Five high speed elevators and one freight elevator with control card access system to office floors
- Parking garage for tenants and visitors
- Convenience of same elevator from parking garage to office floors
- Three parking spaces per 1,000 rentable square feet
- On-site management office
- Air Sanitation HVAC purification filters
- Tenant Building Phone App
- Panoramic Office Views of Miami

Suite 1201 Offers

- Suite features elevator exposure with floor to ceiling glass double doors
- One large conference room upon entry to the suite
- Two executive offices located in a private wing of the suite with plenty of space for two executive assistant workstations
- All three perimeter private offices have floor-to-ceiling glass allowing plenty of natural light within
- One private interior office that may be reutilized as an IT room
- Spacious waiting/reception area to accommodate 4-6 people
- Built-in wall cabinetry for storage
- Large open area that may be used to accommodate 4-6 workstations



For more information please contact

Thad Adams
T: 305.476.2532
Tadams@allenmorris.com

Maricarmen Cabrera
T: 786.378.9638
mcabrera@allenmorris.com

Rafael del Rosal
T: 954.681.2257
rdrosal@allenmorris.com

Performance-Based
Certifications

